

MHC

MHC APPARELS (PVT) LTD.

MHC WEARS (PVT) LTD.

100% EXPORT ORIENTED READY-MADE
GARMENTS MANUFACTURER

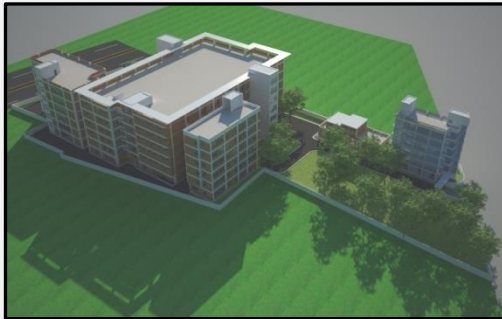


- MHC Apparels (Pvt.) Ltd. and MHC Wears (Pvt.) Ltd. are factories that were established as 100% export oriented ready-made garments manufacturers located within 'SREEPUR' and 'GAZIPUR'.
- Being Founded in 1987, we have gradually transitioned from Buyer Correspondence and Agency as a Trading House to Factories and for past 20+ Years we have operated as a full production company, working on orders and accepting them for direct production within our premises.
- Since commencing operations, we have successfully obtained regular orders from US, Canada and European Customers/Buyers including *Alphabroder (Ash City), Land's End, Costco, CK, Tommy Hilfiger, Go Sports and C&A.*
- We have earned a reputation that entails strict commitment towards delivering quality goods.
- The Factories include Environment, Health and Safety regulations that comprise of local and international standards. Moreover, we are committed to maintaining the highest ethical standards in dealing with our workforce by strictly following all applicable laws, regulations, rules and guidelines in regards to ensuring the human rights and fair employment are intact and functional.
- We have become adept at manufacturing items that require 'SEW-FREE', 'SEAM SEALING', 'FAKE-DOWN' and 'QUILTED PADDING' Jacket/Outwears.
- We have the facilities and machinery to effectively execute these ORDERS as well as an operator base skilled with required machinery.

- MHC Apparels (Pvt.) Ltd. was initially established in Dhaka City at Khilkhet in 2005 and has operated there until February 2017 before being moved to Sreepur and is currently operating there in an area of 3.064 Acres.
- In March 2017, it began it's operations in the new premises and as of now, there are 22 production lines that are fully operational and are already engaged in manufacturing out of the planned 25 lines that will gradually start operation.
- This new factory has been designed with 5 separate buildings- Production, Utility, Office, Dining/Medical and Day Care Centre, all of which take about 255,000 Sqft area in total.
- The new premise has been designed with compliance in mind and as such, keeps the required safety distances between each of the buildings. Additionally, there are two separate assembly areas in the front and at the back of the Main Production Building for further safety & security.
- Broad roads are also at the front and the back of the factory grounds and they offer quick and accessible exits.
- MHC Wears was established in 2011 and is located in Holding# 122 (New), 13/1 (Old) Sataish Road, Sataish, Word# 2, Tongi
- It is a medium sized factory and has been performing strongly since inception due to skilled workforce and experienced management

Details	MHC Apparels	MHC Wears
Factory Operations Commencement	2005(Old Premises) 2017(New Premises)	2011
Production Lines	22 Lines Running	12 Lines Running
Working Hours	60 Hours a week	60 Hours a week
Yearly Turnover	\$60 Million (USD)	

Our Projection for our Completed Factory



Factory Premises



Our Regular Customers



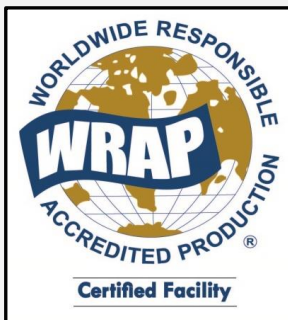
Calvin Klein



TOMMY HILFINGER

Our Certifications

Our Factory is fully compliant and we have mentioned come of our certifications below:



MHC Apparels is certified for ISO 9001:2015, ISO:14001:2015, ISO:18001:2007

MHC Apparels is approved for PVH, GIII, C&A and Land's End

MHC Apparels is Accord certified

MHC Wears is Accord certified

We have worked with various types of Garments and Fabrics in our over **Three Decades Years of Existence**. We have stated some examples of the types we work with and

Production Items

Water Proof Technical Items:

Jackets/Outwear (3 Layer, 2 Layer, Padded, Non-Padded etc.)

Pants (3Layer, 2Layer, Padded, Non-Padded etc)

Bib Pants

Anorak

Rain Coat

Non Waterproof Items:

Jackets (3 Layer, 2 Layer, Padded w/Down, Fake-Down & Flat Padding & w/Quilting Non-Padded, Fleece, Soft Shell etc.).

Vests (3Layer, 2Layer, Padded, Non-Padded etc)

Pants (2Layer, Padded, Non-Padded etc)

Shorts (Canvas, Twill, Satin etc)

Bib Pants, Skirts (Twill, Stretched twill, Polyester, Canvas etc)

Washed Items:

Long and Short Pants

Skirts

Fabric we work with

Fabrics:

3 , 2.5 & 2 Layer Fabrics: Nylon/ Polyester/Taslan & Taffeta Laminated fabrics etc

Fleece, Soft Shell, Tricot, Bonded Fabrics etc

Polyester Fabrics: Ripstop, Dobby, Taslon, Taffeta etc

100% Cotton, Cotton-Stretched, Twill, Satin, Satin-Stretched, Poplin, Corduroy, Single & double twisted yarns etc

Product Gallery: Technical Outerwear Water Proof



Product Gallery: Technical Outerwear Water Proof



Product Gallery: Technical Outerwear Water Proof



Product Gallery: Quilted/Fake Down and Padded Jacket



Product Gallery: Bonded/Softshell/Denim/Fleece Jackets



Product Gallery: Washed Bottoms



Factory Overview (Machines)



Factory Overview (Floor)



Thank you for your time

